



ACA
ARMTS
0386

RESTRICTED

The information given in this document
is not to be communicated, either
directly or indirectly, to the Press or to
any person not authorized to receive it.

ILLUSTRATED SPARE PARTS LIST

FOR

MACHINE GUN, ·30 in., L 3A3

(Cat. No. C2/1005-99-960-5555)

MACHINE GUN, ·30 in., L 3A4

(Cat. No. C2/1005-99-960-5554)

MOUNT TRIPOD, M.G., CAL ·30 M2

(Cat. No. CI/10005-00-650-7052)

MOUNTING, TRIPOD, ·30 in. M.G., L 2A1

(Cat. No. CI/MG 35 GA)

AND

ACCESSORIES/ANCILLARIES

DIRECTOR OF ORDNANCE SERVICES
MINISTRY OF DEFENCE

2nd JULY, 1965

RESTRICTED

ILLUSTRATED SPARE PARTS LIST

PREFACE

1. This Illustrated Spare Parts List has been prepared to assist Units in identifying any component part or assembly of parts likely to be required as replacements. All concerned will use the catalogue numbers and item names given in this List when demanding spare parts or when referring in correspondence to any part of the Equipment.
2. The principal difference between this List and a Comprehensive List of Component Parts (Illustrated) is that, whilst the latter covers every component of an equipment, this List includes only those items which are normally provided by R.A.O.C. or R.E.
3. The Catalogue Nos. quoted in this list will supersede any Catalogue Nos. that may have been allotted previously. Where the letters "NP" appear in the plate and item number column, this indicates that the item is not provisioned and not normally supplied.
4. When demanding Spare Parts the following particulars must be quoted:-
 - (a) V.A.O.S. or R.E.V.S. Section.
 - (b) Catalogue number.
 - (c) Item Name.
 - (d) Name of Equipment for which the part is required.
5. Alternatives quoted apply only to the Equipment covered by this list.
6. Certain items illustrated in this list have not been catalogued since it is considered that they will not normally be required as replacements. Should there be a requirement for any item not catalogued, demands may be submitted quoting the Army Code No. of this publication, item number, plate reference and item name. Where a manufacturer's number is shown this should also be quoted.
7. Any communication regarding this list should be made to the O.i/c., Army Cataloguing Agency, (Armaments), Red Barracks, Frances St., Woolwich, London, S.E.18.
8. Amendments to this list will be notified in D.C.Is. and Units concerned will indent through their command R.A.O.C. Stationery Section or overseas equivalent for copies as required. It is essential that this list be kept fully amended and details of every amendment entered in the panel below.

Amendment Serial No.	D.C.I.	By whom Amended	Date of Insertion	Amendment Serial No.	D.C.I.	By whom Amended	Date of Insertion

RESTRICTED

ILLUSTRATED SPARE PARTS LIST
 FOR
 MACHINE GUN, ·30 in.,L 3A3
 MACHINE GUN, ·30 in.,L 3A4
 MOUNT TRIPOD, M.G., CAL ·30 M2
 MOUNTING, TRIPOD, ·30 in.M.G.,L 2A1
 AND
 ACCESSORIES/ANCILLARIES

CONTENTS

	<u>PAGE</u>
ACCESSORIES/ANCILLARIES	21
INDEX TO KEY PLATE	2
INDEX TO PART NUMBERS	22 - 24
KEYPLATE	3
MACHINE GUN, ·30in., L3A3	5 - 10
MACHINE GUN, ·30in., L3A4	5 - 13
MOUNT, TRIPOD, M.G., CAL ·30 M2	14 - 18
MOUNTING, TRIPOD, ·30in. M.G., L2A1	14 - 18

ABBREVIATIONS

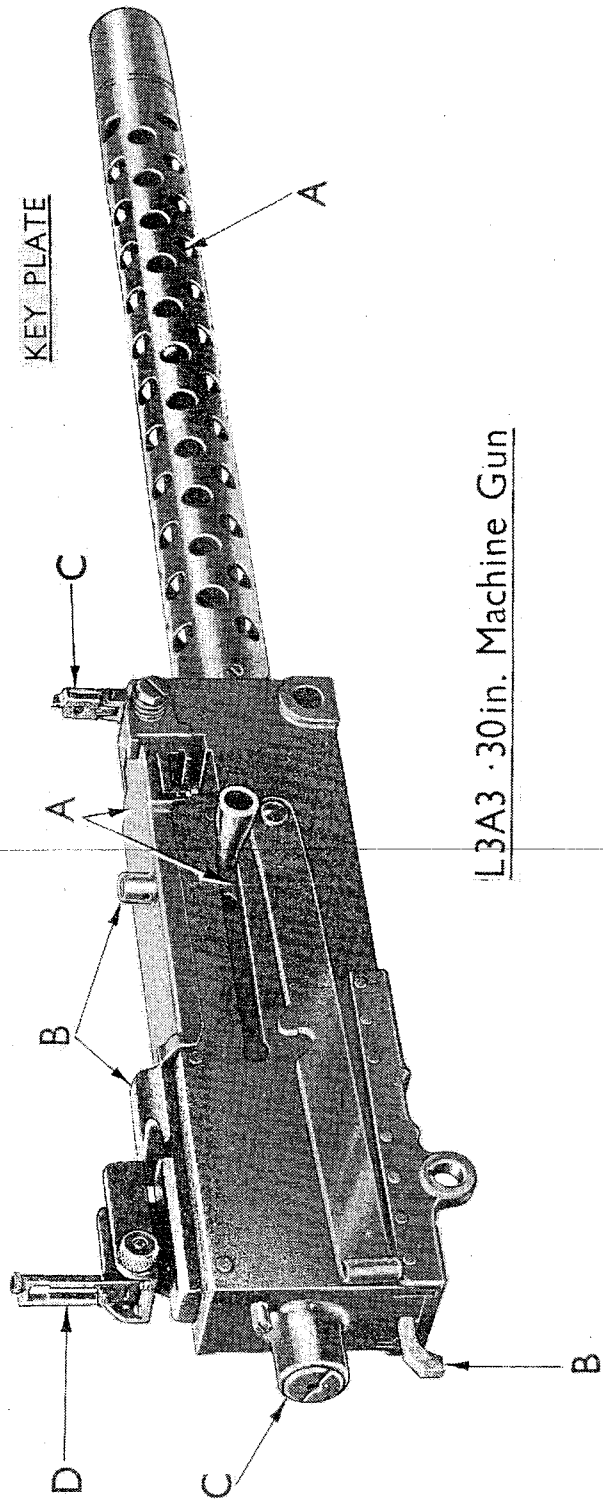
BA	British Association	Mk	Mark
Cal	Calibre	mm	Millimetre
Cat.	Catalogue	NF	National Fine
Cd	Cadmium	No.	Number
contd	Continued	od	Outside Diameter
csk	Countersunk	oz	Ounce(s)
D.C.I's	Defence Council Instructions	R.A.O.C.	Royal Army Ordnance Corps
dia	Diameter	R.E.	Royal Engineers
ext	External	R.E.V.S.	Royal Engineers Vocabulary of Stores
hd	Head	S.A.	Small Arms
id	Inside Diameter	SWG	Standard Wire Gauge
in.	Inch	thk	Thick
int	Internal	UNF	Unified Fine
lg	Long	V.A.O.S.	Vocabulary of Army Ordnance Stores
M.G.	Machine Gun	Zn	Zinc

INDEX TO KEY PLATE

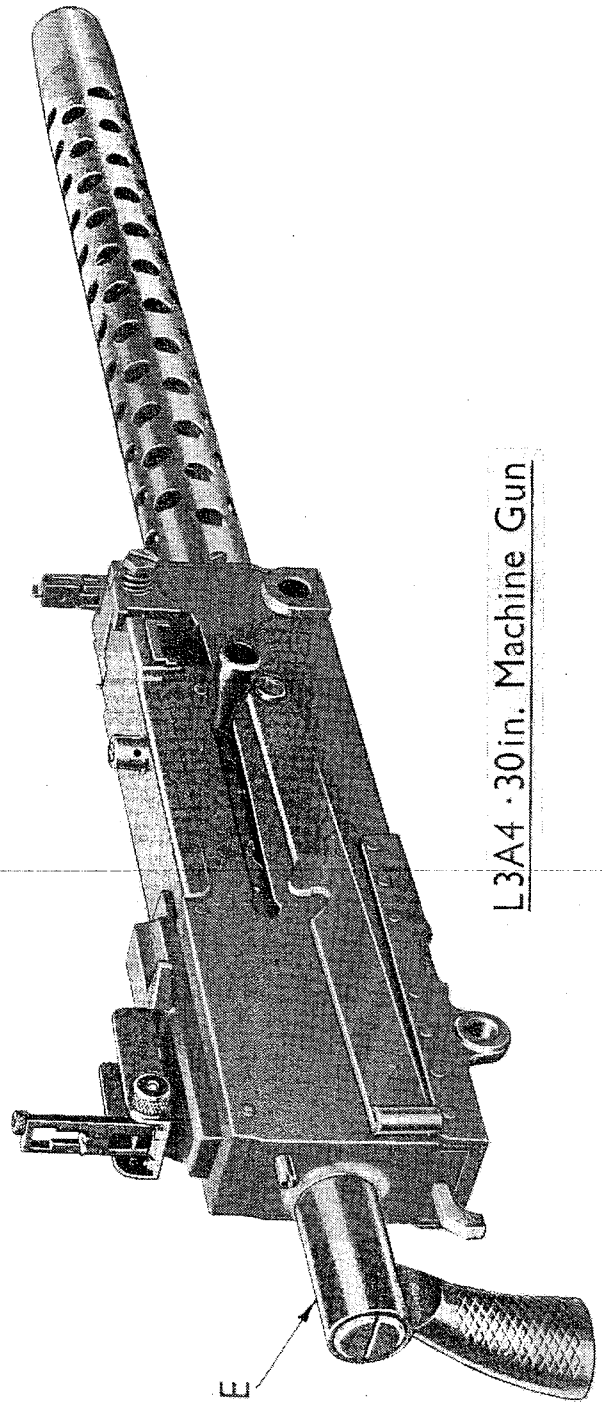
PLATE

A	BARREL AND COVER ASSEMBLY
B	LATCH ASSEMBLY AND TRIGGER
C	BACK PLATE ASSEMBLY AND FRONT SIGHT ASSEMBLY
D	REAR SIGHT ASSEMBLY
E	BACK PLATE ASSEMBLY

KEY PLATE



L3A3 · 30 in. Machine Gun



L3A4 · 30 in. Machine Gun

MACHINE GUN DETAILS.

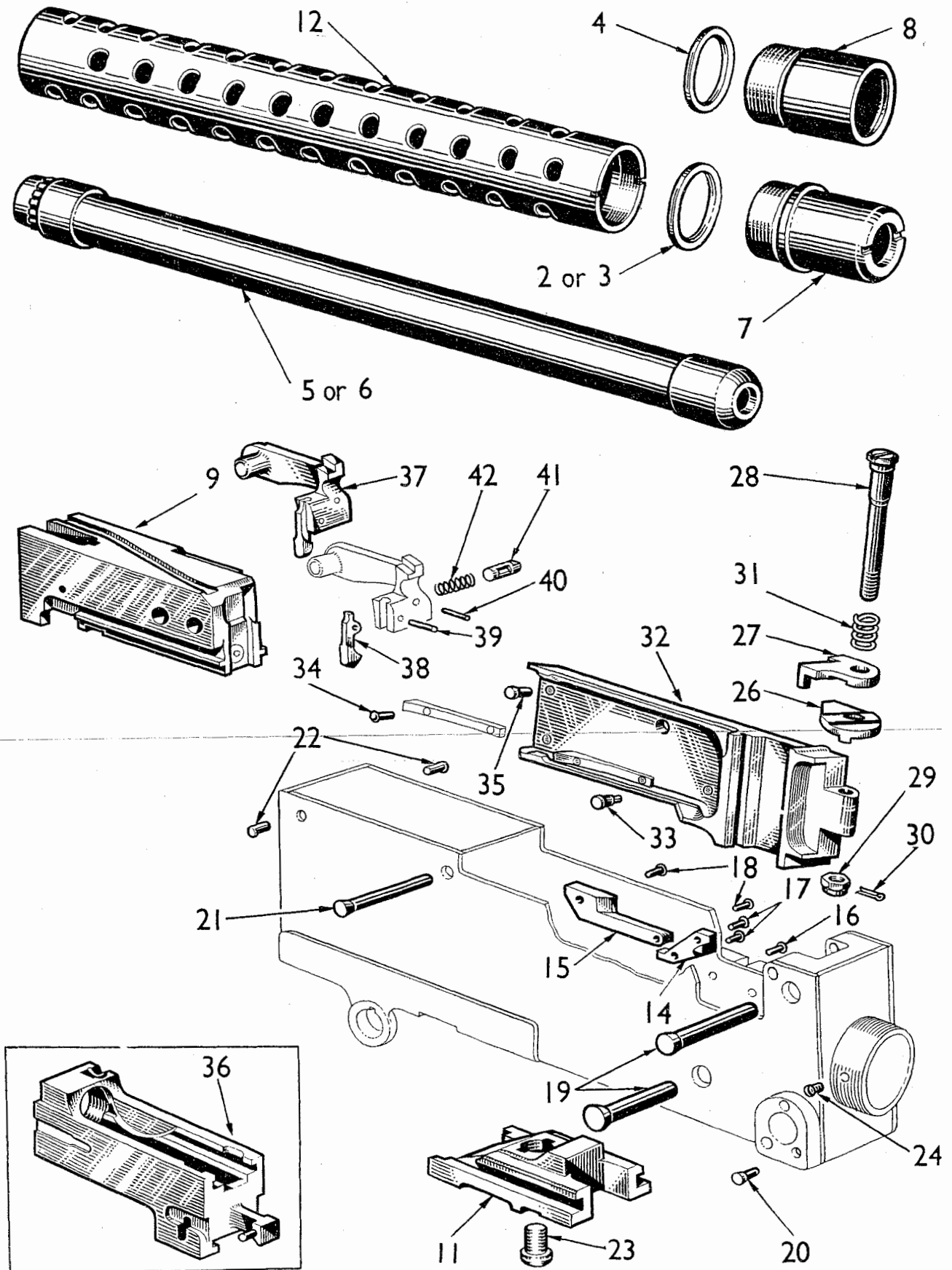


PLATE AND ITEM No.	CATALOGUE No.	ITEM NAME OR DESIGNATION	DRAWING No.	No. OFF
A 1	C2/1005-99-960-5555	MACHINE GUN, .30 in., L3A3	D7142392 P3/19131/IM/299, P3/19664/IM/299, P3/19668/IP/299	1
2	C2/1005-99-960-4531	BAND, LOCK, BARREL BEARING OR	MG5912	1
3	C1/1005-00-517-0491	BAND, LOCK, FRONT BARREL BEARING	A5170491	1
4	C1/1005-00-517-0492	BAND, LOCK, FRONT BARREL BEARING PLUG ... (b) (c)	A170492	1
5	C1/1005-00-653-5233	BARREL (a) (b)	D535233	1
		OR		
6	C1/1005-00-714-8399	BARREL, ASSEMBLY	D7148399	1
7	C1/1005-00-622-1301	BEARING, BARREL, FRONT	B6221301	1
		OR		
8	C1/1005-00-014-6750	BEARING, BARREL, FRONT (b) (c)	A146750	1
9	C2/1005-99-960-5556	BREECH BOLT ASSEMBLY	P3/19064/IM/299 P3/19405/IM/299 P3/19671/IP/299	1
10NP		CASING ASSEMBLY	D6535358	1
11	C1/1005-00-556-4133	CAM, LOCK, BREECH	C5564133	1
12	C1/1005-00-556-2503	JACKET, BARREL	C5562503	1
13NP		PLATE, SIDE, L.H., ASSEMBLY	C5564222	1
14	C1/1005-00-550-8452	CAM, EXTRACTOR	C5508452	1
15	C1/1005-00-601-7469	CAM, FEED, EXTRACTOR	B6017469	1
16	C1/5320-00-502-0509	RIVET, SOLID, belt holding pawl bracket	A5020509	4
17	C1/5320-00-502-0514	RIVET, SOLID, extractor cam	A5020514	2
18	C1/5320-00-502-0514	RIVET, SOLID, extractor feed cam	A5020514	2
19	C1/5320-00-502-0600	RIVET, SOLID, side plate, large	A5020600	2
20	C1/5320-00-502-0601	RIVET, SOLID, side plate, small	A5020601	1
21	C1/5320-00-502-0522	RIVET, SOLID, top plate, long	A5020522	1
22	C1/5320-00-502-0711	RIVET, SOLID, top plate, short	A5020711	2
23	C1/5305-00-502-0527	SCREW, MACHINE, breech lock cam	A5020527	1
24	C1/5305-00-013-3617	SCREW, MACHINE, retaining, barrel jacket		1
25NP		CATCH, COVER, ASSEMBLY	B6008757	1
26	C1/1005-00-600-8822	PLATE, FIXED	B6008822	1
27	C1/1005-00-600-8823	PLATE, MOVABLE	B6008823	1
28	C1/5305-00-600-8824	SCREW, SHOULDER, COVER	B6008824	1
29	C1/5310-00-012-5016	NUT, CASTELLATED, HEXAGON, cover screw		1
30	C1/5315-99-915-6372	PIN, COTTER, SPLIT, steel, Cd plated, 1/16 x 5/8 in.		1
31	C1/1005-00-600-8825	SPRING, COVER CATCH	A6008825	1
32	C1/1005-00-550-9801	COVER, ASSEMBLY	C5509801	1
33	C1/5315-00-712-3315	PIN, SHOULDER, HEADED, cover extractor spring	A7123315	1
34	C1/5320-00-713-3164	RIVET, SOLID, cover extractor cam, long	A7133164	1
35	C1/5320-00-502-0513	RIVET, SOLID, cover plate	A5020513	2
36	C1/1005-00-556-4139	EXTENSION, BARREL, ASSEMBLY	C5564139	1
37	C1/1005-00-562-1076	EXTRACTOR, SMALL ARMS CARTRIDGE	C5621076	1
38	C1/1005-00-601-7497	EJECTOR, SMALL ARMS CARTRIDGE	B6017497	1
39	C1/5315-00-502-0570	PIN, STRAIGHT, HEADLESS, ejector	A5020570	1
40	C1/5315-00-502-0570	PIN, STRAIGHT, HEADLESS, extractor cam plunger	A5020570	1
41	C1/1005-00-626-1101	PLUNGER, EXTRACTOR CAM	B6261101	1
42	C1/1005-00-614-7228	SPRING, EXTRACTOR CAM PLUNGER	B6147228	1

(a) Obsolescent.
 (b) Required for guns of early manufacture.
 (c) Use with PLUG, front barrel bearing, Cat. No. C1/1005-00-010-0880 page 9.

PLATE AND ITEM No.	CATALOGUE No.	ITEM NAME OR DESIGNATION	DRAWING No.	No. OFF
B		MACHINE GUN, .30in., L3A3 (contd)		
1	NP	FRAME, LOCK, ASSEMBLY	P3/19707/IM/299 P3/19670/IP/299	1
2	C1/1005-00-556-4142	ACCELERATOR	C5564142	1
3	C2/1005-99-960-5557	FRAME, LOCK (MG4999)	P3/17683/IM/299 P3/19054/IM/299 P3/19672/IP/299	1
4	C1/1005-00-613-1253	PIN ASSEMBLY, accelerator	B6131253	1
5	C2/MG4813	PIN, axis, lock frame sear (b)	MG4813	1
6	C2/5315-99-960-6615	PIN, SHOULDER, HEADLESS (c)	MG5916	1
7	C1/5315-00-502-0503	PIN, SHOULDER, HEADLESS, trigger	A5020503	1
8	C2/5315-99-960-5524	PIN, STRAIGHT, HEADED	MG5520	1
9	C2/5315-99-960-5523	PIN, STRAIGHT, HEADLESS	MG5521	1
10	C2/5315-99-960-5521	PIN, STRAIGHT, HEADLESS, axis, lock frame sear(d)	MG5602	1
11	C2/1005-99-960-6843	PLUNGER, BARREL, ASSEMBLY (MG4806)	P3/14129/IM/299 P3/19673/IP/299	1
12	C2/5320-99-960-6616	RIVET, SOLID (c)	MG5917	1
13	Z2/5305-99-120-1704	SCREW, GRUB, BA, steel, socket drive, flat point, No.2 x 1/2in.		1
14	Z2/5310-99-101-2862	NUT, PLAIN, HEXAGON, BA, steel, No.2, Zn plated		1
15	C2/1005-99-960-5518	SEAR, LOCK FRAME, ASSEMBLY	MG189SA	1
16	C2/1005-99-960-5526	SPACER, SLEEVE	MG5523	1
17	C2/1005-99-960-5527	SPRING, HELICAL, COMPRESSION, lock frame sear	MG4814	1
18	C1/1005-00-513-5057	SPRING, HELICAL, COMPRESSION, barrel plunger ...	A5135057	1
19	C1/1005-00-614-7231	SPRING, HELICAL, COMPRESSION, trigger pin ...	B6147231	1
20	C2/1005-99-960-5519	TRIGGER	MG5522	1
21	C1/1005-00-614-7212	HANDLE, BOLT (f)	B6147212	1
22	C1/1005-00-556-4247	LATCH, ASSEMBLY	B7106949	1
23	C1/1005-00-556-4247	LATCH, ASSEMBLY (a)	C5564247	1
24	C1/1005-00-010-1625	RIVET, LATCH SPRING	A5152467	1
25	C1/1005-00-010-2219	SPRING, LATCH (e)	B110372	1
26	C2/1005-99-960-5528	LATCH, HANDLE, BOLT	MG4807	1
27	C2/1005-99-960-5553	LEVER, BREECH BOLT, COCKING	MG5525	1
28	C1/1005-00-601-7503	LEVER, FEED BELT	B6017503	1
29	C1/1005-00-614-7214	LOCK, BREECH	B6147214	1
30	C1/1005-00-550-8461	PAWL, FEED BELT	C5508461	1
31	C1/1005-00-614-7216	PAWL, HOLDING, BELT	B6147216	1
32	C1/1005-00-613-1253	PIN ASSEMBLY, breech lock	B6131253	1
33	C1/1005-00-613-1255	PIN, BELT, FEED PAWL, ASSEMBLY	B6131255	1
34	C1/1005-00-614-7217	PIN, BELT HOLDING PAWL (split)	B6147217	1
35	C1/1005-00-550-9186	PIN, FIRING, ASSEMBLY	C5509186	1
36	C1/5315-00-502-0498	PIN, STRAIGHT, HEADLESS, firing pin spring ...	A5020498	1
37	C1/1005-00-614-7229	SPRING, FIRING PIN	B6147229	1
38	C1/5315-00-502-0567	PIN, GROOVED, HEADED, cocking lever	A5020567	1
39	C1/1005-00-611-0529	PIVOT, FEED LEVER, GROUP ASSEMBLY	B6110529	1
40	C1/1005-00-515-7374	BUSHING, BELT FEED LEVER PIVOT	A5157374	1
41	C1/1005-00-519-6284	NUT, BELT FEED LEVER PIVOT BUSHING	A5196284	1
42	C1/5315-00-515-7434	PIN, GROOVED, HEADED, belt feed lever	A5157434	1
43	C1/5305-00-558-3689	SCREW, SET, belt feed lever pivot	A5196283	1
44	Z2/5310-99-120-2520	WASHER, LOCK, steel, int type, 0.125id x 0.300od x 0.018in. thk, Zn plated		1
45	G1/5310-99-912-9583	WASHER, LOCK, steel, flat int teeth, oil blacked finish, 3/8id, 0.680od, 0.033in. thk		1

- (a) Obsolescent.
- (b) No further provision when stock is exhausted.
- (c) If required.
- (d) Use when stocks of C2/MG4813 item No.5 are exhausted.
- (e) Modified for RIVET, LATCH SPRING, item No.24.
- (f) Latest pattern.

MACHINE GUN DETAILS

Plate B

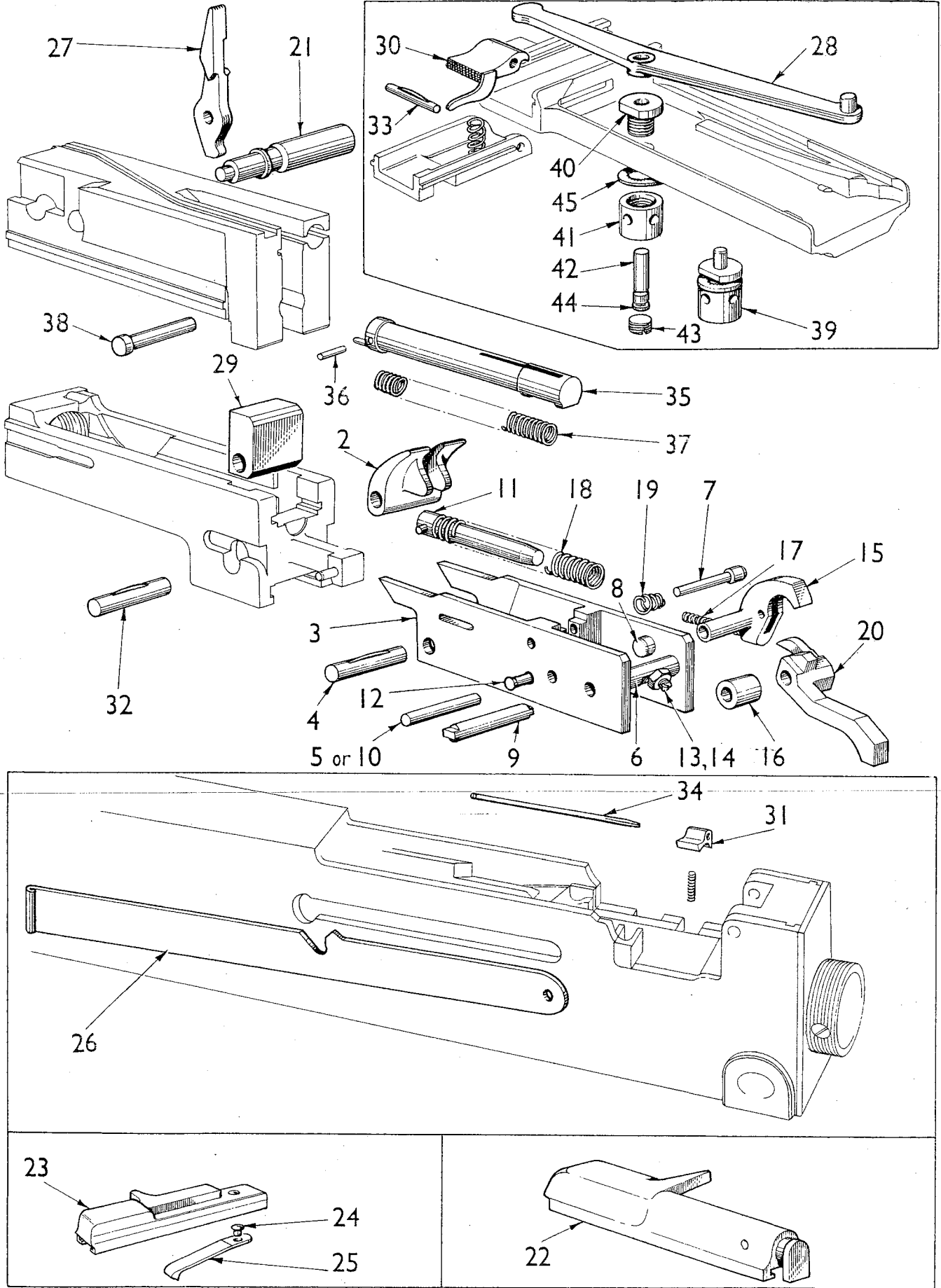


Plate C

MACHINE GUN DETAILS

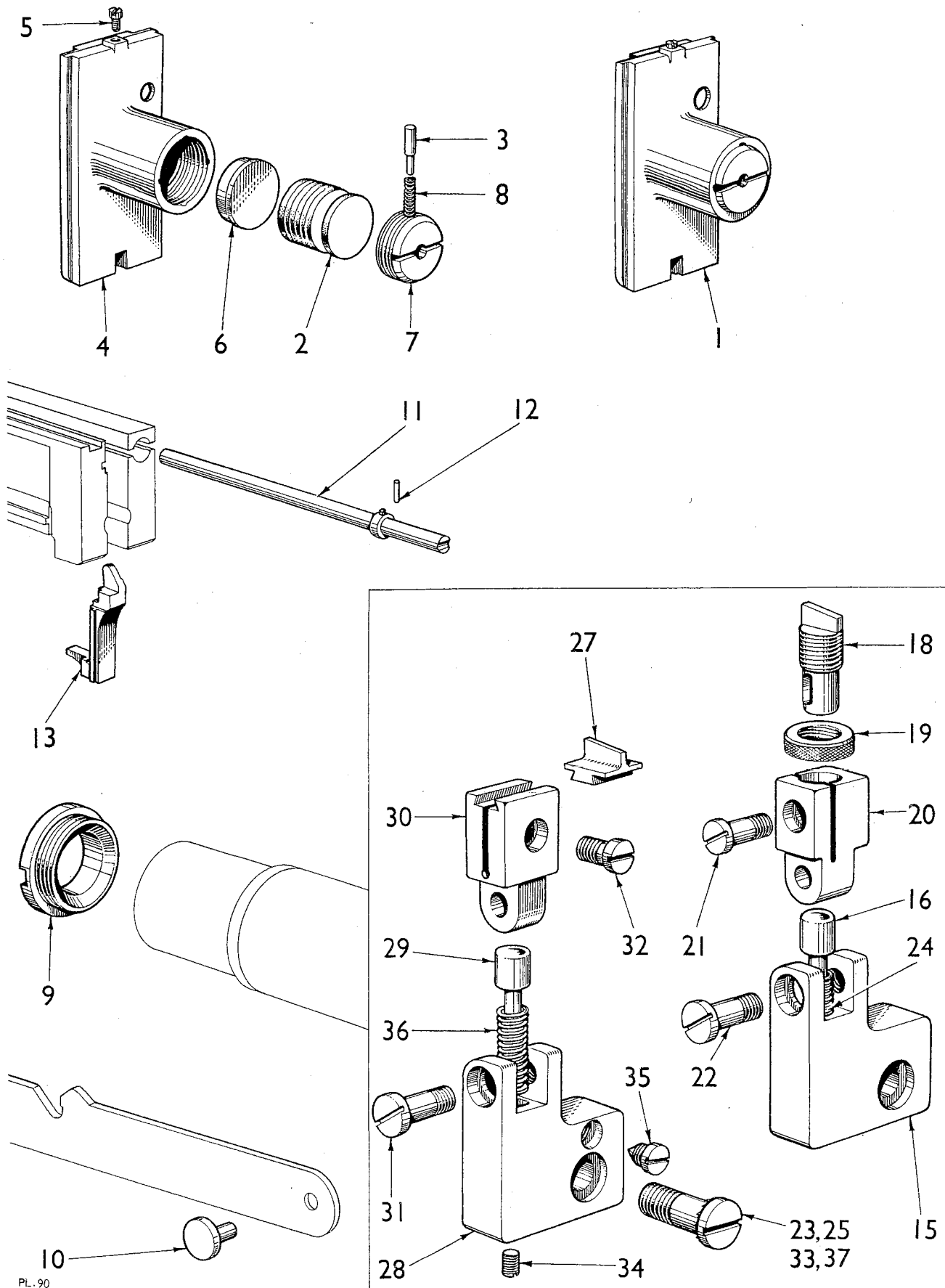


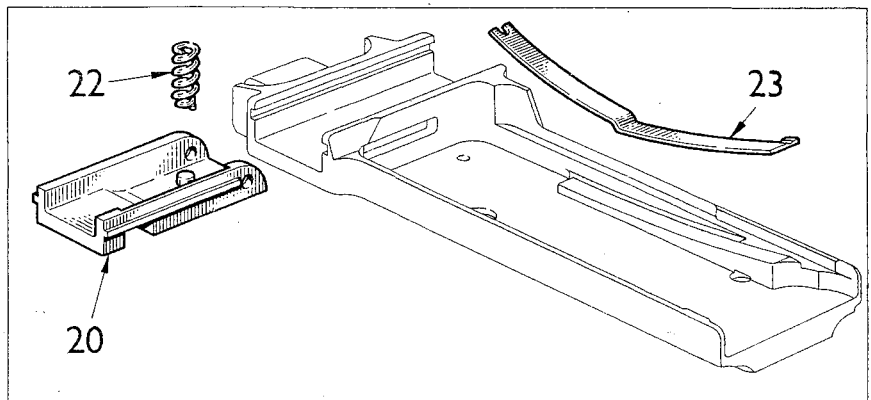
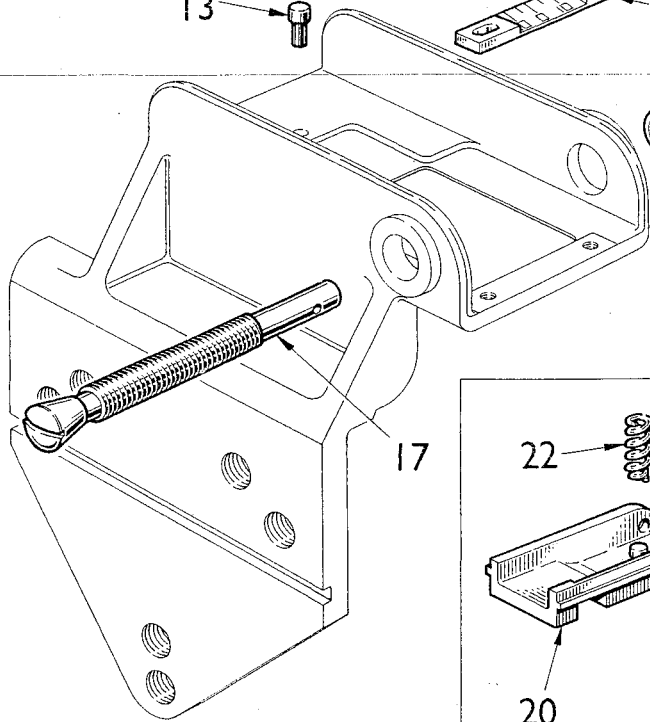
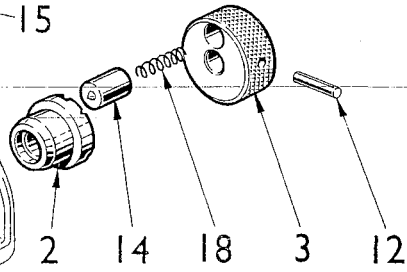
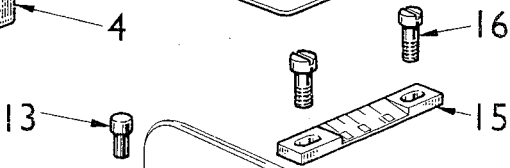
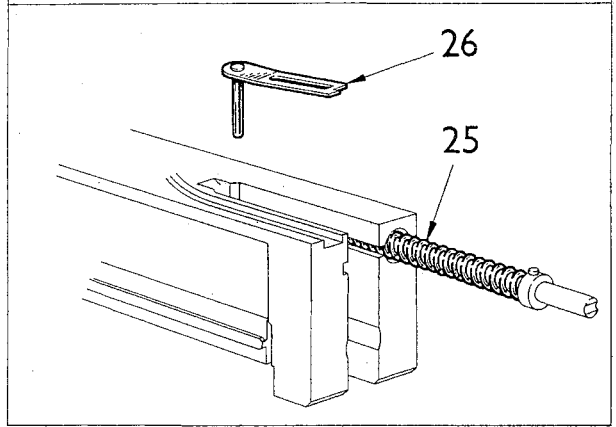
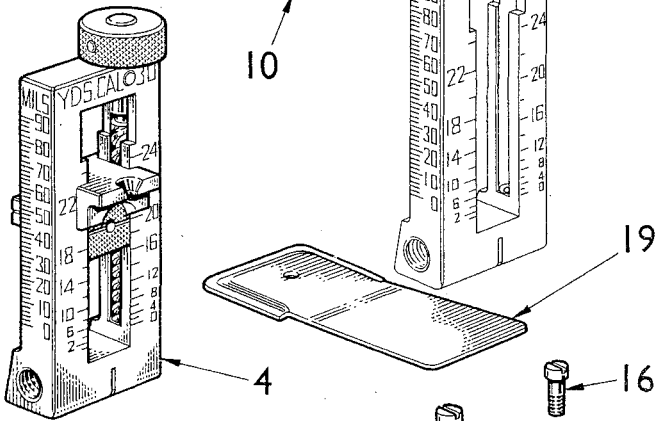
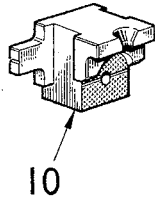
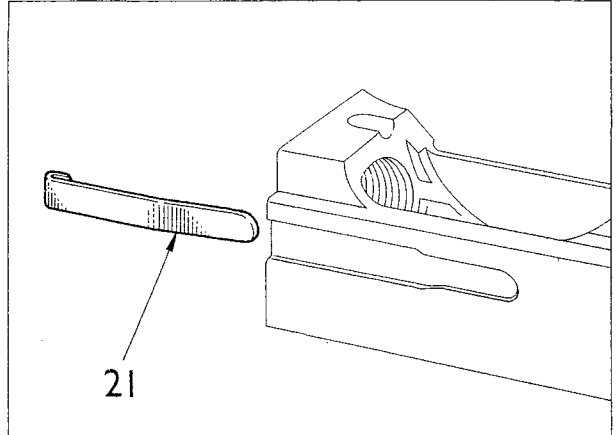
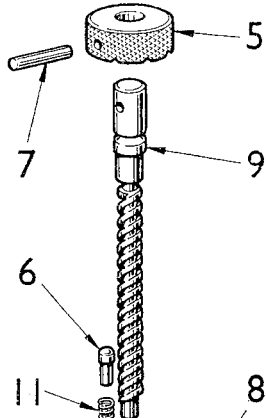
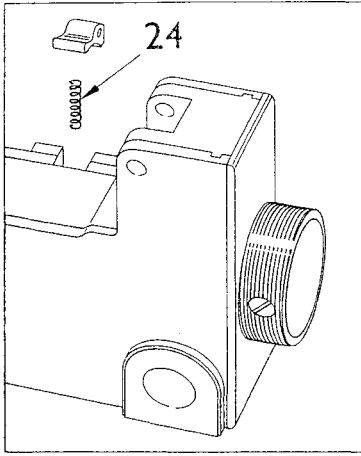
PLATE AND ITEM No.	CATALOGUE No.	ITEM NAME OR DESIGNATION	DRAWING No.	No. OFF
C		MACHINE GUN, .30 in., L3A3 (contd)		
1	C1/1005-00-562-1039	PLATE, BACK, WITH BUFFER, ASSEMBLY (e)	C5621039	1
2	C1/1005-00-500-9374	DISC, SOLID, PLAIN, buffer	A5009374	8
3	C1/5315-00-500-9278	PIN, SHOULDER, HEADLESS, adjusting screw	A5009278	1
4 NP		PLATE, BACK, ASSEMBLY	C6195998	1
5	C1/5305-00-502-0609	SCREW, STOP LATCH	A5020609	1
6	C1/1005-00-502-0581	PLATE, BUFFER... ..	A5020581	1
7	C1/1005-00-600-9833	SCREW, ADJUSTING	B6009833	1
8	C1/1005-00-500-9300	SPRING, HELICAL, COMPRESSION, adjusting screw pin	A5009300	1
9	C1/1005-00-010-0880	PLUG, front barrel bearing (b) (c)	B147157A	1
10	C2/5320-99-960-5525	RIVET, SOLID	MG4808	1
11	C1/1005-00-614-7222	ROD, DRIVING SPRING, ASSEMBLY	B6147222	1
12	C1/5315-00-502-0498	PIN, STRAIGHT, HEADLESS, driving spring rod	A5020498	1
13	C2/1005-99-960-5529	SEAR, BOLT	MG5524	1
			P3/17426/IM/299	1
14 NP		SIGHT, BRACKET, FRONT, GROUP ASSEMBLY	B7132923	1
15	C1/1005-00-714-2261	BODY, FRONT SIGHT BRACKET	B7142261	1
16	C1/5315-00-515-6881	PIN, SHOULDER, HEADLESS, front sight	A5156881	1
17 NP		POST, FRONT SIGHT, ASSEMBLY	B7162616	1
18	C1/1005-00-716-2630	BLADE, FRONT SIGHT	A7162630	1
19	C1/5310-00-716-2631	NUT, ADJUSTING, FRONT SIGHT BLADE	A7162631	1
20	C1/1005-00-716-2632	POST, FRONT SIGHT	A7162632	1
21	C1/1005-00-716-2633	SCREW, CLAMPING, FRONT SIGHT BLADE	A7162633	1
22	C1/5305-00-515-6884	SCREW, BEARING, FRONT SIGHT	A5156884	1
23	C1/5305-00-501-3258	SCREW, MACHINE, front sight bracket	A5013258	1
24	C1/1005-00-515-6882	SPRING, front sight	A5156882	1
25	C1/5310-00-711-0440	WASHER, LOCK (d)	A7110440	1
		OR		
26 NP		SIGHT, BRACKET, FRONT, GROUP ASSEMBLY	B144235	1
27	C1/1005-00-601-7463	BLADE, FRONT SIGHT, No. 3 .236	6017463	1
28	C1/1005-00-614-4237	BODY, FRONT SIGHT BRACKET (a)	B6144237	1
29	C1/5315-00-515-6881	PIN, SHOULDER, HEADLESS, front sight	A5156881	1
30	C1/1005-00-515-6880	POST, FRONT SIGHT	A156880	1
31	C1/5305-00-515-6884	SCREW, BEARING, FRONT SIGHT	A5156884	1
32	C1/5305-00-501-3250	SCREW, MACHINE, clamping, front sight	A13250	1
33	C1/5305-00-501-3258	SCREW, MACHINE, front sight bracket	A5013258	1
34	C1/5305-00-515-6883	SCREW, RETAINING, FRONT SIGHT	A5156883	1
35	C1/5305-00-501-3249	SETScrew, FRONT SIGHT BRACKET	A5013249	1
36	C1/1005-00-515-6882	SPRING, FRONT SIGHT	A5156882	1
37	C1/5310-00-711-0440	WASHER, LOCK (d)	A7110440	1

- (a) Obsolescent
- (b) Required for guns of early manufacture.
- (c) Only required when BEARING, BARREL, FRONT, Cat.No. C1/1005-00-014-6750 page 5 is fitted.
- (d) No further provision when stock is exhausted.
- (e) When this assembly is replaced by any one of items 2, 12 or 22 on page 13 this weapon then becomes MACHINE GUN, .30 in., L3A4

PLATE AND ITEM No.	CATALOGUE No.	ITEM NAME OR DESIGNATION	DRAWING No.	No. OFF
D		MACHINE GUN, 30 in, L3A3 (contd)		
1NP		SIGHT, REAR, ASSEMBLY	C5564906	1
2	C1/1005-00-515-9870	BUSHING, REAR SIGHT	A5159870	1
3	C1/3005-00-600-8809	KNOB, REAR SIGHT WINDAGE SCREW	B6008809	1
4	C1/1005-00-554-5964	LEAF, REAR SIGHT, ASSEMBLY	C5545964	1
5	C1/5355-00-515-2432	KNOB, REAR SIGHT ELEVATING SCREW	A5152432	1
6	C1/5315-00-516-3398	PIN, STRAIGHT, HEADED, rear sight elevating ... screw knob	A5163398	1
7	C1/5315-00-501-3166	PIN, STRAIGHT, HEADLESS, rear sight elevating. knob	A5013166	1
8	C1/5315-00-501-3162	PIN, STRAIGHT, HEADLESS, retaining, rear. ... sight elevating screw	A5013162	1
9	C1/1005-00-611-0312	SCREW, ELEVATING, REAR SIGHT	B6110312	1
10	C1/1005-00-554-5961	SLIDE, REAR SIGHT	C5545961	1
11	C1/1005-00-516-3397	SPRING, HELICAL, COMPRESSION, rear sight. ... elevating screw knob pin.	A5163397	1
12	C1/5315-00-501-3700	PIN, STRAIGHT, HEADLESS, rear sight windage knob	A5013700	1
13	C1/5315-00-516-2810	PIN, STRAIGHT, HEADLESS, stop, rear sight . leaf	A5162810	1
14	C1/1005-00-501-3155	PLUNGER, REAR SIGHT WINDAGE CLICK	A5013155	1
15	C1/1005-00-515-2430	SCALE, WINDAGE, REAR SIGHT	A5152430	1
16	C1/5305-00-501-3167	SCREW, REAR SIGHT WINDAGE SCALE	A5013167	2
17	C1/1005-00-515-2429	SCREW, WINDAGE, REAR SIGHT	A5152429	1
18	C1/1005-00-501-3154	SPRING, HELICAL, COMPRESSION, rear sight .. windage pin	A5013154	1
19	C1/1005-00-501-3157	SPRING, REAR SIGHT BASE	A5013157	1
20	C1/1005-00-613-1262	SLIDE, FEED BELT, ASSEMBLY	B6131262	1
21	C1/1005-00-614-7230	SPRING, BARREL LOCKING... ..	B6147230	1
22	C1/1005-00-597-0429	SPRING, BELT FEED PAWL	B6147224	1
23	C1/1005-00-601-7513	SPRING, COVER, EXTRACTOR.	B6017513	1
24	C1/1005-00-614-7225	SPRING, HELICAL, COMPRESSION, belt holding pawl ..	A6147225	1
25	C1/1005-00-621-2654	SPRING, HELICAL COMPRESSION, driving	B6212654	1
26	C2/1005-99-960-5558	SPRING, SEAR ASSEMBLY	MG187SA	1

REAR SIGHT ETC.

Plate D



MACHINE GUN DETAILS.

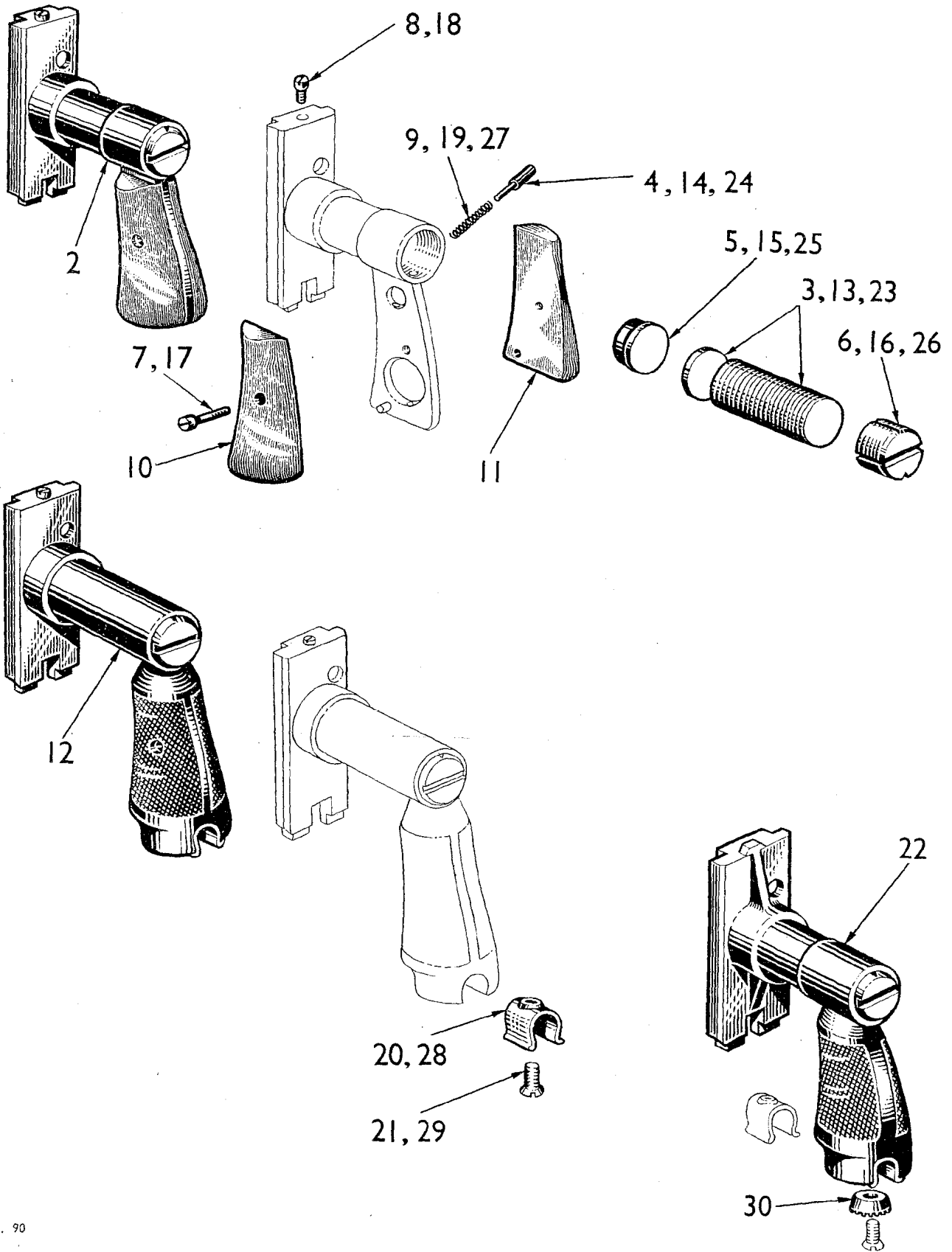


PLATE AND ITEM No.	CATALOGUE No.	ITEM NAME OR DESIGNATION	DRAWING No.	No. OFF
E 1	C2/1005-99-960-5554	MACHINE GUN, .30 in., L3A4 (FOR REST OF DETAILS SEE PAGES 5, 6, 9 and 10)	(c) D714.2392 P3/19131/IM/299, P3/19664/IM/299 P3/19668/IP/299	1
2	C1/1005-00-559-1794	PLATE, BACK WITH BUFFER AND STOCK, ASSEMBLY ...	(b) C5591794	1
3	C1/1005-00-500-9374	DISC, SOLID, PLAIN, buffer ...	A5009374	22
4	C1/5315-00-513-5052	PIN, SHOULDER, HEADLESS, adjusting screw ...	A5135052	1
5	C1/1005-00-502-0581	PLATE, BUFFER ...	A5020581	1
6	C1/1005-00-613-4059	SCREW, ADJUSTING ...	B6134059	1
7	C1/5305-00-502-0613	SCREW, MACHINE, stock ...	A5020613	1
8	C1/5305-00-502-0609	SCREW, STOP, LATCH ...	A5020609	1
9	C1/1005-00-513-5053	SPRING, ADJUSTING SCREW PLUNGER ...	A5135053	1
10	C1/1005-00-613-1264	STOCK, LEFT, ASSEMBLY ...	B131264	1
11	C1/1005-00-613-1263	STOCK, RIGHT, ASSEMBLY ...	B131263	1
		OR		
12	C1/1005-00-010-0700	PLATE, BACK, WITH BUFFER AND STOCK, ASSEMBLY (a)	(b) C64010	1
13	C1/1005-00-500-9374	DISC, SOLID, PLAIN, buffer ...	A5009374	22
14	C1/5315-00-513-5052	PIN, SHOULDER, HEADLESS, adjusting screw ...	A5135052	1
15	C1/1005-00-502-0581	PLATE, BUFFER ...	A5020581	1
16	C1/1005-00-613-4059	SCREW, ADJUSTING ...	B6134059	1
17	C1/5305-00-502-0613	SCREW, MACHINE, stock ...	A5020613	1
18	C1/5305-00-502-0609	SCREW, STOP, LATCH ...	A5020609	1
19	C1/1005-00-513-5053	SPRING, ADJUSTING SCREW PIN ...	A5135053	1
20	C1/1005-00-513-9969	SPRING, STOCK ...	A5139969	1
21	C1/5305-00-022-7364	SCREW, MACHINE, corrosion resisting steel, csk hd No.8 -36 NF -2A x 1/2 in. ...		1
		OR		
22	C1/1005-00-710-0059	PLATE, BACK, WITH BUFFER, ASSEMBLY ...	(b) C7100059	1
23	C1/1005-00-500-9374	DISC, SOLID, PLAIN, buffer ...	A5009374	22
24	C1/5315-00-513-5052	PIN, SHOULDER, HEADLESS, adjusting screw ...	A5135052	1
25	C1/1005-00-502-0581	PLATE, BUFFER ...	A5020581	1
26	C1/1005-00-613-4059	SCREW, ADJUSTING ...	B6134059	1
27	C1/1005-00-513-5053	SPRING, ADJUSTING SCREW PIN ...	A5135053	1
28	C1/1005-00-513-9969	SPRING, STOCK ...	A5139969	1
29	C1/5305-00-022-7364	SCREW, MACHINE, corrosion resisting steel, csk hd No.8 - 36 NF-2A x 1/2 in. ...		1
30	C1/5310-00-013-8595	WASHER, LOCK, steel, csk, ext teeth, phosphated, 0.164 in. id. ...		1

- (a) Obsolescent.
- (b) When any of the above ASSEMBLIES, items 2, 12 or 22 are replaced by item 1 on page 9, this weapon then becomes MACHINE GUN, .30 in., L3A3.
- (c) The only differences between the L3A3 and L3A4 are the PLATE, BACK, ASSEMBLIES.

PLATE AND ITEM No.	CATALOGUE No.	ITEM NAME OR DESIGNATION	DRAWING No.	No. OFF
F 1	C1/1005-00-650-7052	MOUNT, TRIPOD, MACHINE GUN, CAL .30 M2... .. (b) OR	D6507052	1
1A	C1/MG35GA	MOUNTING, TRIPOD, .30 in., M.G., L2A1 (b)	D6507052	1
2	C1/1005-00-555-9333	BAR ASSEMBLY, TRAVERSING	C5559333	1
3	C1/3120-00-610-8201	BEARING, PINTLE	B6108201	1
4	C1/5305-00-054-0896	SET SCREW, corrosion resistant steel, No. 10 - 32 NF - 2A x 5/16 in., flat point, passivated finish	BCUXI 540896	1
5	C1/5306-00-516-9879	BOLT, MACHINE, front leg	A5169879	1
6	C1/5310-00-011-4942	NUT, PLAIN, HEXAGON, steel, 3/8 in. - 24 UNF-2B, phosphated	BBBXI 427318	1
7	G1/5310-99-941-0926	OR NUT, PLAIN, HEXAGON, "P" steel, 3/8 in. UNF-2B, Zn coated		1
8	G1/5310-99-941-1320	OR NUT, PLAIN, HEXAGON, "P" steel, 3/8 in. UNF-2B, Cd plated		1
9	C1/5306-00-513-9973	BOLT, MACHINE, pintle... ..	A5139973	1
10	G1/5315-99-942-0389	PIN, COTTER, SPLIT, mild steel, phosphated, 1/8 x 1.1/4 in.		1
11	C1/5306-00-516-9882	BOLT, MACHINE, rear leg	A5169882	2
12	C1/5310-00-011-4942	NUT, PLAIN, HEXAGON, steel, 3/8 in. - 24 UNF-2B, phosphated	BBBXI 427318	1
13	G1/5310-99-941-0926	OR NUT, PLAIN, HEXAGON, "P" steel, 3/8 in. UNF-2B, Zn coated		1
14	G1/5310-99-941-1320	OR NUT, PLAIN, HEXAGON, "P" steel, 3/8 in. UNF-2B, Cd plated		1
15	C1/5306-00-516-9880	BOLT, MACHINE, traversing bar	A5169880	2
16	G1/5310-99-941-0924	NUT, PLAIN, HEXAGON, "P" steel, 1/4 in. UNF-2B, Zn coated		1
17	G1/5310-99-941-1318	OR NUT, PLAIN, HEXAGON, "P" steel, 1/4 in. UNF-2B, Cd plated		1
18	C1/5310-00-011-5728	OR NUT, PLAIN, HEXAGON, steel, 1/4 in. UNF-2B, phosphated	BBBXI 427315	1
19	C1/5306-00-516-9881	BOLT, MACHINE, tripod head	A5169881	2
20	C1/5310-00-011-5728	NUT, PLAIN, HEXAGON, steel, 1/4 in. UNF-2B, phosphated	BBBXI 427315	1
21	G1/5310-99-941-0924	OR NUT, PLAIN, HEXAGON, "P" steel, 1/4 in. UNF-2B, Zn coated		1
22	G1/5310-99-941-1318	OR NUT, PLAIN, HEXAGON, "P" steel, 1/4 in. UNF-2B, Cd plated		1
23	C1/1005-00-610-8195	LEG, TRIPOD, MOUNT, front	C6108195	1
24	C1/1005-00-555-9338	LEG, TRIPOD MOUNT, rear left	C5559338	1
25	C1/1005-00-555-9337	LEG, TRIPOD MOUNT, rear right	C5559337	1
26	C1/1005-00-513-9959	LATCH, SLEEVE	B5139959	1
27	C1/5315-00-514-0004	PIN, STRAIGHT, HEADLESS, sleeve latch	A5140004	1
28	C1/1005-00-513-9997	SPRING, HELICAL, COMPRESSION, sleeve latch, 9 coils	A5139997	1
29	C1/1005-00-610-8986	LOCK, ASSEMBLY, PINTLE	B6108986	1
30	C1/1005-00-514-1080	CAM, RELEASE, PINTLE LOCK... ..	A5141080	1
31	C1/5340-00-514-2877	SPRING, HELICAL, COMPRESSION: pintle lock 13 coils	A5142877	2
32	G2/GB21301	STEEL, tool, rods, bright, 1/8 in. dia x 7/8 in. lg		1
<p>(b) These TRIPOD MOUNTS are similar and all parts are interchangeable. The only differences being that for the MOUNTING, TRIPOD, .30 in., M.G., L2A1 materials and methods of protective finishes are to British Specifications.</p>				

TRIPOD MOUNT.

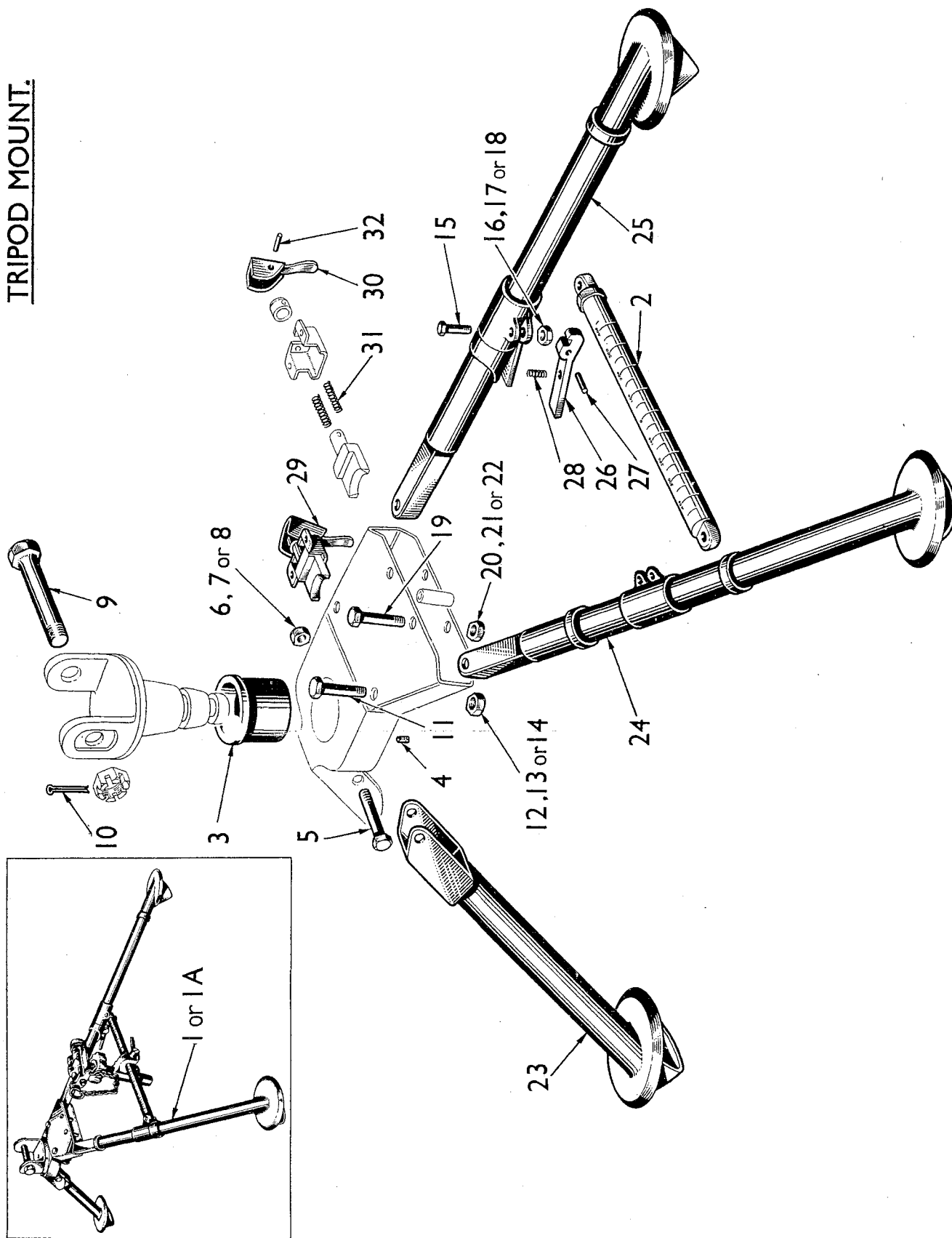


Plate G

TRIPOD MOUNT.

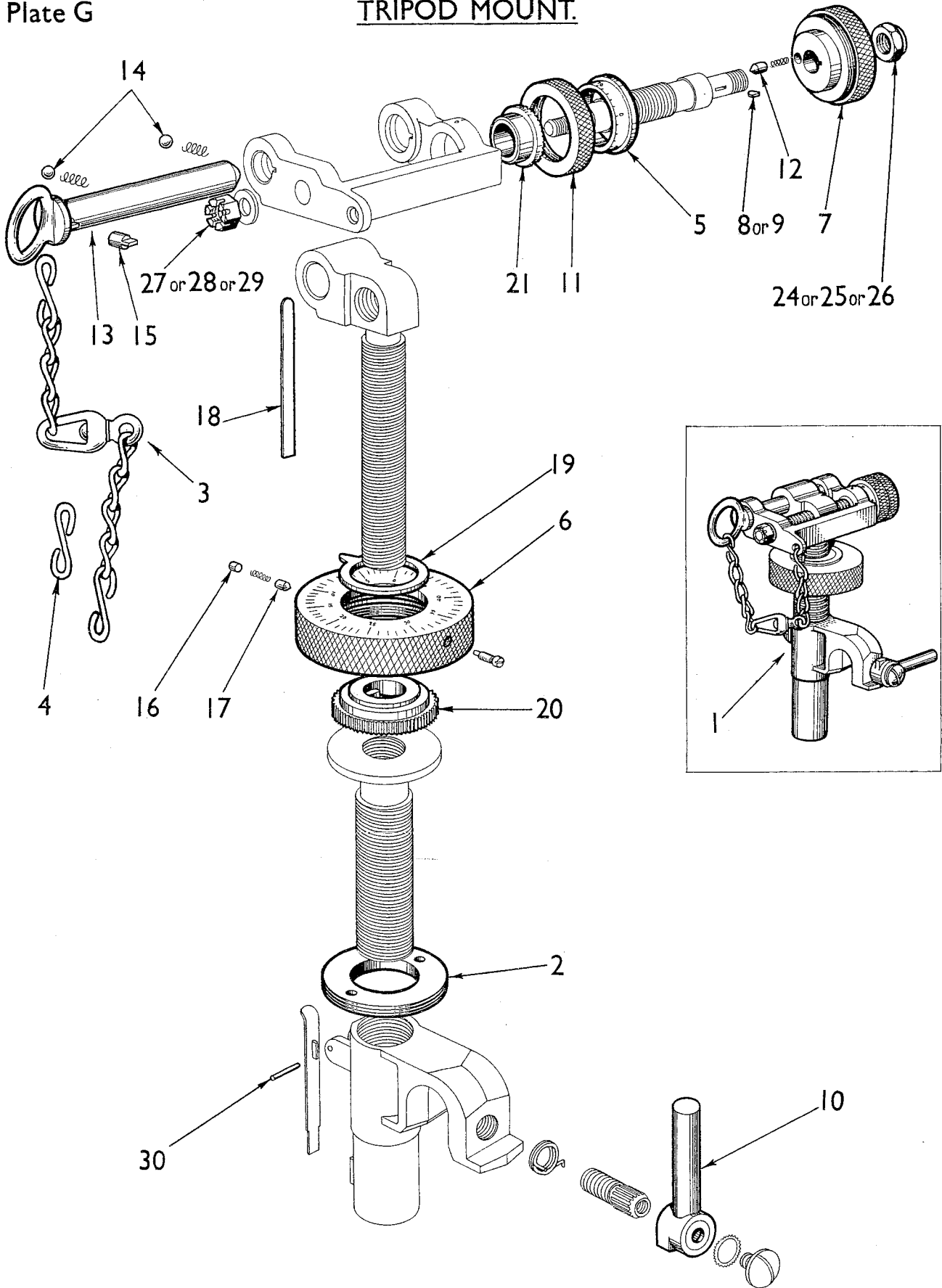


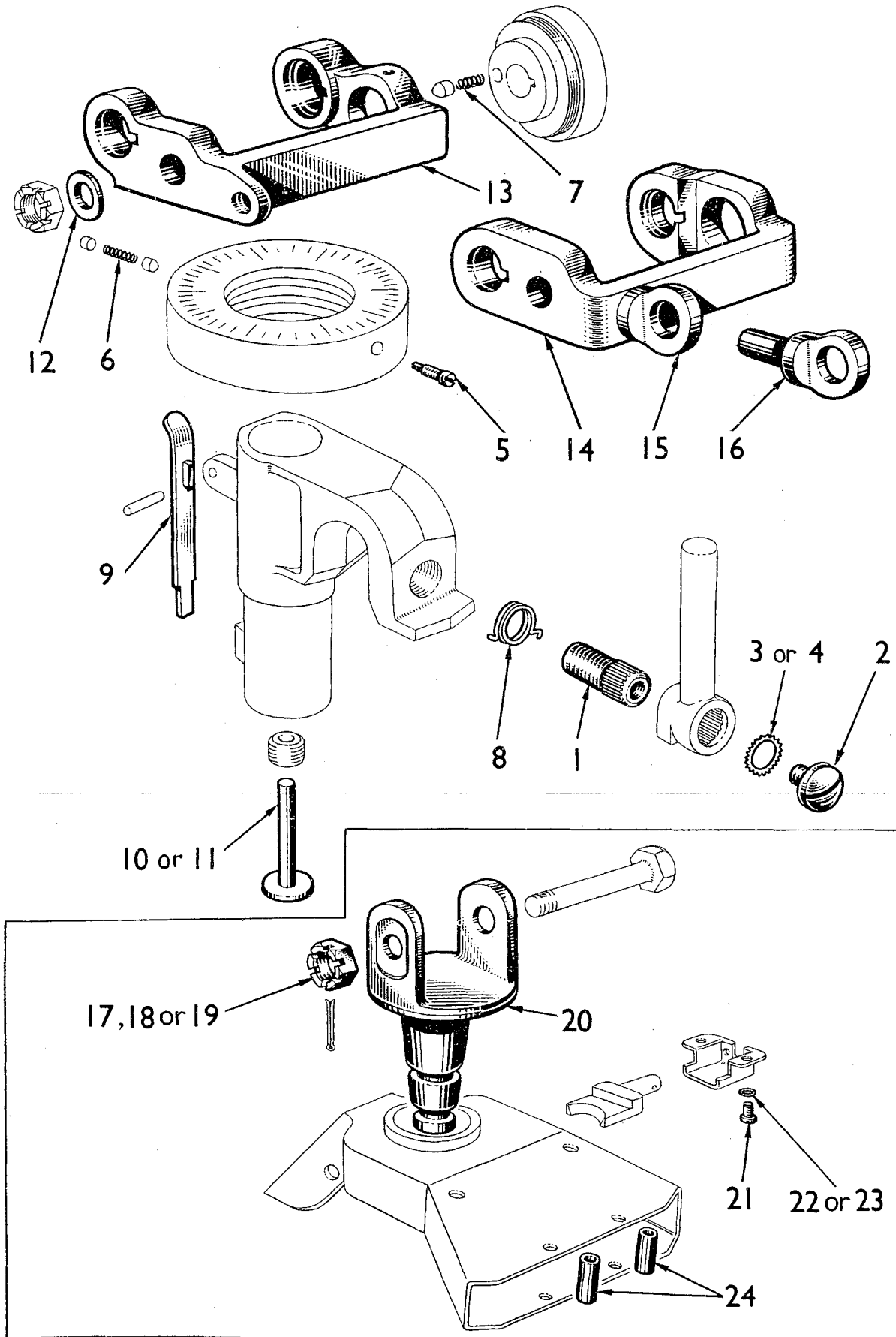
PLATE AND ITEM No.	CATALOGUE No.	ITEM NAME OR DESIGNATION	DRAWING No.	No. OFF
G		MOUNT, TRIPOD, MACHINE GUN, CAL .30 M2 (contd)		
1	C1/1005-00-557-4620	MECHANISM ASSEMBLY, ELEVATING	C5574620	1
2	C1/4730-00-514-0485	BUSHING, MACHINE THREAD, retaining	A5140485	1
3	C1/1005-00-514-1460	CHAIN ASSEMBLY, SINGLE LEG	A5141460	1
4	G2/GB16597	WIRE, steel, mild drawn, galvanised, No.12 SWG		*
5	C1/1005-00-517-1492	DIAL, SCALE, traversing mechanism	A5171492	1
6	C1/1005-00-610-8211	HANDWHEEL, ELEVATING	C6108211	1
7	C1/1005-00-615-8375	HANDWHEEL, TRAVERSING	B6158375	1
8	C1/5315-00-021-8218	KEY, WOODRUFF, steel, 3/32 x 5/16 in. (No. 207) ... OR	BGAX4218218	1
9	LV6/MT1/5111	KEY, WOODRUFF, steel, 3/32 x 5/16 in. (No. 207) ...		1
10	C1/1005-00-519-4313	LEVER, TRAVERSING SLIDE LOCK	A5194313	1
11	C1/4730-00-517-1491	NUT, UNION, traversing scale	A5171491	1
12	C1/1005-00-517-1495	PIN, CLICK, ELEVATING AND TRAVERSING MECHANISM ...	A5171495	1
13	C1/5340-00-517-4113	PIN, QUICK RELEASE, joint elevating screw	B5174113	1
14	LV6/MT7/3110-99-950-0567	BALL, BEARING, chrome carbon steel, 3/16 in. dia		2
15	C1/5315-00-514-1090	KEY, ELEVATING SCREW JOINT	A5141090	1
16	C1/5315-00-513-9995	PIN, STRAIGHT, HEADLESS, handwheel	A5139995	1
17	C1/5315-00-513-9983	PIN, STRAIGHT, HEADLESS, indexing	A5139983	1
18	C1/1005-00-514-0658	PLATE, DESIGNATION, upper elevating screw	A5140658	1
19	C1/5355-00-513-9982	POINTER, DIAL, elevating mechanism	A5139982	1
20	C1/1005-00-513-9994	RING, CLICK, ELEVATING HANDWHEEL	B5139994	1
21	C1/1005-00-517-4175	RING, CLICK, TRAVERSING MECHANISM	A5174175	1
22NP		SCREW ASSEMBLY, ELEVATING	C5591827	1
23NP		SCREW, traversing	B6166490	1
24	C1/5310-00-050-3347	NUT, SELF-LOCKING, HEXAGON, steel, phosphated, 5/16 in. UNF OR	BBSX4,503347	1
25	G1/5310-99-941-9041	NUT, SELF-LOCKING, HEXAGON, steel, 5/16 in. UNF, fibre insert, thin, Zn coated OR		1
26	G1/5310-99-941-9042	NUT, SELF-LOCKING, HEXAGON, steel, 5/16 in. UNF, fibre insert, Cd plated		1
27	C1/5310-00-050-3377	NUT, SELF-LOCKING, HEXAGON, steel, 1/4 in. UNF OR	BBWX1,503377	1
28	G1/5310-99-941-0880	NUT, SLOTTED, HEXAGON, steel, 1/4 in. UNF, Zn coated OR		1
29	G1/5310-99-941-1274	NUT, SLOTTED, HEXAGON, steel, 1/4 in. UNF, Cd plated		1
30	G2/GB21276	STEEL, tool, rods, bright, 3/32 x 5/8 in. lg ...		1

* Length as required for 'S' hooks.

PLATE AND ITEM No.	CATALOGUE No.	ITEM NAME OR DESIGNATION	DRAWING No.	No. OFF
H		MOUNT, TRIPOD, MACHINE GUN, CAL .30 M2 (contd.) Mechanism, elevating, assembly (contd.)		
1	C1/5305-00-513-9988	SCREW, LOCKING, TRAVERSING SLIDE	A5139988	1
2	C1/5305-00-513-9989	SCREW, MACHINE, traversing slide lock lever...	A5139989	1
3	C1/5310-00-012-5754	WASHER, LOCK, steel, ext teeth, No. 12 NF 0.216 in. dia	BEAX7 125754	1
		OR		
4	G1/5310-99-941-8936	WASHER, LOCK, steel, ext teeth, type 11, No.1BA		1
5	C1/5305-00-514-0612	SET SCREW, lock, elevating handwheel	A5140612	1
6	C1/1005-00-513-9999	SPRING, HELICAL, COMPRESSION, pawl, indexing, 7 coils... ..	A5139999	1
7	C1/1005-00-201-0643	SPRING, HELICAL, COMPRESSION, pin, click, 12 coils	A5172237	1
8	C1/1005-00-305-0725	SPRING, HELICAL, TORSION, traversing slide lock, 2 coils... ..	A8412295	1
9	C1/1005-00-518-9757	STOP, LOWER ELEVATING SCREW	A5189757	1
10	C1/1005-00-840-8768	STOP, UPPER ELEVATING SCREW	B8408768	1
		OR		
11	C1/1005-00-517-4170	STOP, UPPER ELEVATING SCREW	A5174170	1
12	C1/1005-00-517-4192	WASHER, THRUST, traversing screw nut	A5174192	1
13 NF		YOKE, elevating screw upper	C6166489	1
		OR		
14 NP		YOKE, elevating screw upper (Alternative A)...	C6166489	1
15	M3/FL1062	EYE, riveting, steel, 1/4 x 1/2 in. lg		1
		OR		
16	C1/5320-00-050-5832	RIVET, SOLID, eye head, steel, 5/16 in. eye dia, 1/4 x 1/2 in. lg	BMNXI 505832	1
17	C1/5310-00-513-9964	NUT, SLOTTED, HEXAGON, pintle bolt	A5139964	1
		OR		
18	G1/5310-99-941-0885	NUT, SLOTTED, HEXAGON, steel, 9/16 in. UNF, Zn. coated		1
		OR		
19	G1/5310-99-941-1279	NUT, SLOTTED, HEXAGON, steel, 9/16 in. UNF, Cd plated		1
20	C1/1005-00-555-9332	PINTLE, TRIPOD MOUNT... ..	C5559332	1
21	C1/5305-00-514-1950	SCREW, MACHINE, pintle lock housing... ..	A5141950	2
22	C1/5310-00-013-8167	WASHER, LOCK, steel, int teeth, 1/4 in., phosphated	BEAXI 138167	1
		OR		
23	G1/5310-99-120-6043	WASHER, LOCK, steel, int teeth, type 12, 1/4 in., oil blacked finish		1
24	C1/1005-00-513-9962	SPACER, SLEEVE, tripod head	A5139962	2

TRIPOD MOUNT

Plate H



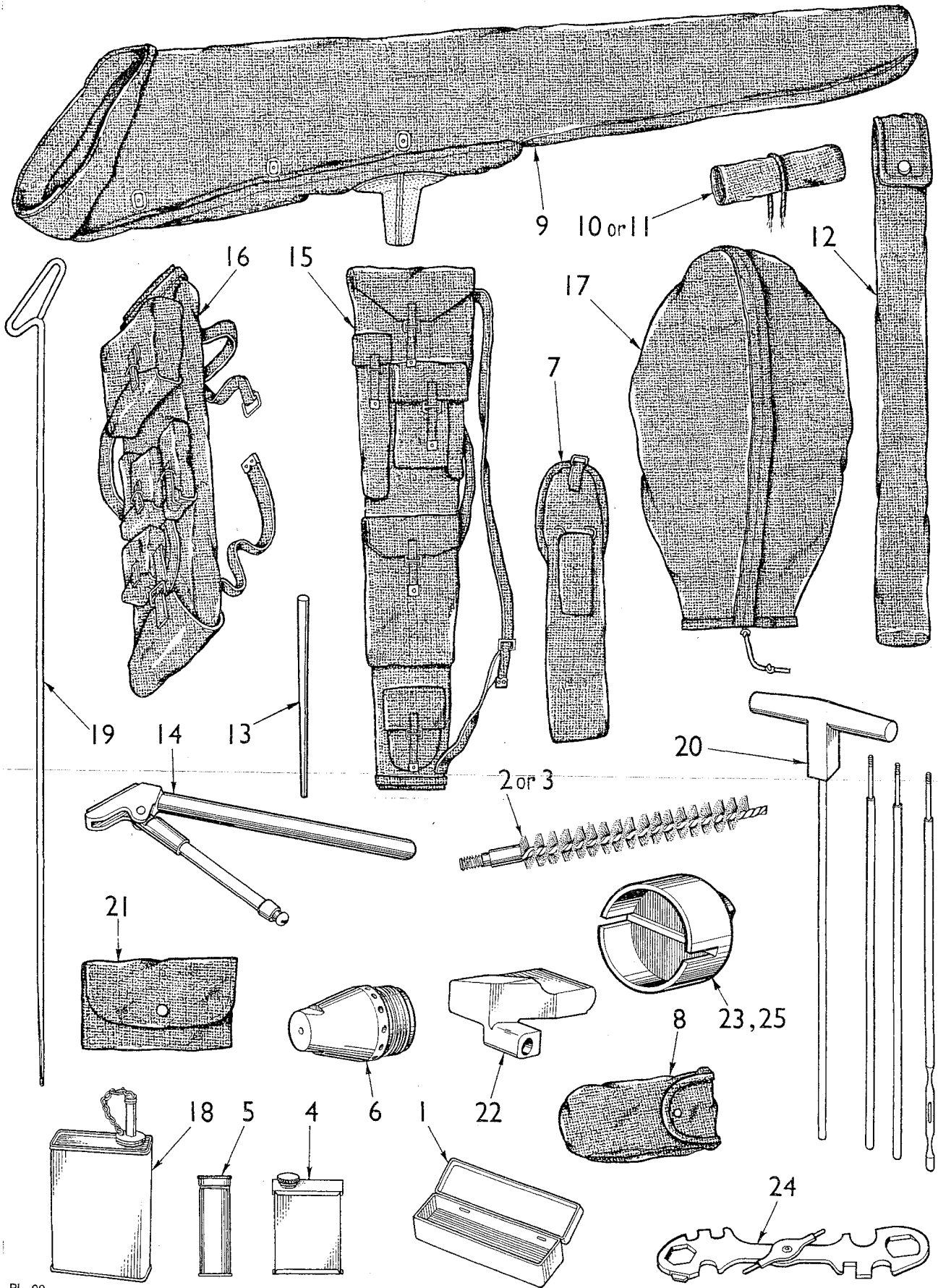


PLATE AND ITEM No.	CATALOGUE No.	ITEM NAME OR DESIGNATION	DRAWING No.	No. OFF
		<u>ACCESSORIES/ANCILLARIES</u>		
J				
1	C1/BE6063	BOX, SMALL PARTS, M.G., NO. 4, Mk 1, Empty ... (b)	DD(E)1897	1
2	C1/1005-00-556-4174	BRUSH, CLEANING, SMALL ARMS, Cal .30 OR	C5564174	1
3	C1/1005-00-550-4035	BRUSH, CLEANING, SMALL ARMS, Cal .30	C5504035	1
4	C1/BD0133	CAN, OIL, M.G. Mk 1	S.A.I.D.999A	1
5	C1/1005-00-614-7310	CAN, TUBULAR, (3/4 in. dia x 2.9/16 in.w/screw top)(b)	B6147310	1
6	C2/1005-99-960-4546	CAP, BARREL, BLANK FIRING, .30 in. M.G., Mk 2 (hj)	MG5911	1
7	C1/1005-00-550-6573	CASE, SMALL ARMS CLEANING ROD, Cal .30, M1 ... (c)	D5506573	1
8	C1/1005-00-555-9656	CASE, SPARE BOLT, M2 (c)	C5559656	1
9	C1/1005-00-653-1749	COVER, MACHINE GUN, M13, Cal .30	D6531749	1
10	C2/BG4070	COVER, MUZZLE, BESA 7.92 mm M.G., No. 1, Mk. 1 ... OR	MD4088/1	1
11	C1/1005-00-557-3326	COVER, MUZZLE, M.G., Cal .30... ..	5573326	1
12	C1/1005-00-559-3026	COVER, SPARE BARREL (d)	C5593026	1
13	M3/CM2015	DRIFFT, No. 18, Mk. 1 (g)	CM2015	1
14	C1/4933-00-550-3854	EXTRACTOR, RUPTURED CARTRIDGE CASE, Cal .30, Mk 4	C5503854	1
15	C1/BE9445	HOLDALL, BREN, .303 in. M.G., Mk 1	DD(E)2850	1
16	C1/1005-99-960-2797	HOLDALL, S.A., SPARE PARTS AND TOOLS, Mk 1 ... (d)	9602797	1
17	C1/1005-00-659-1428	HOOD, MOUNT, Cal .30 TRIPOD	6591428	1
18	C1/A19/C59736	OILER RECTANGULAR, 12 oz w/cap and chain ... (e)	C5559736	1
19	C1/BD9225	ROD, CLEANING, .303 in. M.G., Mk 5	DD(E)2686	1
20	C1/1005-00-650-8237	ROD, CLEANING SMALL ARMS, Cal .30, M1	D6508237	1
21	C1/5120-00-650-7389	ROLL, TOOL CANVAS, EMPTY, M12 (c)	D6507389	1
22	C2/MG5677	STOP, CARTRIDGE, BLANK FIRING, .30 in., M.G. Mk 1 (hj)	MG5677	1
23	C1/5120-00-614-7277	WRENCH ASSEMBLY, BARREL BEARING PLUG, Cal .30 (f)	C6147277	1
24	C1/5120-00-556-8334	WRENCH, COMBINATION, M6... ..	C5568334	1
25	C2/SM633	WRENCH, SOCKET, FRONT BARREL BEARING PLUG, Mk 1/1 (f)	SM633	1

- (b) Alternatives.
- (c) Not required when item 15 is issued.
- (d) Alternatives.
- (e) Alternatives.
- (f) Alternatives.
- (g) Not required if provided with main armament.
- (h) Held together under C2/CB0099/CN.
- (j) For training purposes.

PART OR ITEM IDENTIFICATION No.	PAGE	PART OR ITEM IDENTIFICATION No.	PAGE	PART OR ITEM IDENTIFICATION No.	PAGE
<u>1005-00-010-</u>		<u>1005-00-517-</u>		<u>1005-00-562-</u>	
0070	13	0491	5	1039	9
0880	9	0492	5	1076	5
1625	6	1492	17		
2219	6	1495	17		
		4170	18	<u>1005-00-597-</u>	
		4175	17	0429	10
		4192	18		
<u>1005-00-014-</u>				<u>1005-00-600-</u>	
6750	5			8809	10
		<u>1005-00-518-</u>		8822	5
		9757	18	8823	5
<u>1005-00-201-</u>				8825	5
0643	18			9833	9
		<u>1005-00-519-</u>			
<u>1005-00-305-</u>		4313	17	<u>1005-00-601-</u>	
0725	18	6284	6	7463	9
				7469	5
<u>1005-00-500-</u>		<u>1005-00-550-</u>		7497	5
9300	9	4035	21	7503	6
9374	9,13	6573	21	7513	10
		8452	5		
		8461	6		
<u>1005-00-501-</u>		9186	6	<u>1005-00-610-</u>	
3154	10	9801	5	8195	14
3155	10			8211	17
3157	10			8986	14
		<u>1005-00-554-</u>			
<u>1005-00-502-</u>		5961	10	<u>1005-00-611-</u>	
0581	9,13	5964	10	0312	10
				0529	6
		<u>1005-00-555-</u>			
<u>1005-00-513-</u>		9332	18	<u>1005-00-613-</u>	
5053	13	9333	14	1253	6
5057	6	9337	14	1255	6
9959	14	9338	14	1262	10
9962	18	9656	21	1263	13
9969	13			1264	13
9994	17	<u>1005-00-556-</u>		4059	13
9997	14	2503	5		
9999	18	4133	5	<u>1005-00-614-</u>	
		4139	5	4237	9
		4142	6	7212	6
<u>1005-00-514-</u>		4174	21	7214	6
0658	17	4247	6	7216	6
1080	14			7217	6
1460	17			7222	9
		<u>1005-00-557-</u>		7225	10
		3326	21	7228	5
<u>1005-00-515-</u>		4620	17	7229	6
2429	10			7230	10
2430	10	<u>1005-00-559-</u>		7231	6
6880	9	1794	13	7310	21
6882	9	3026	21		
7374	6				
9870	10				
<u>1005-00-516-</u>					
3397	10				

PART OR ITEM IDENTIFICATION No.	PAGE	PART OR ITEM IDENTIFICATION No.	PAGE	PART OR ITEM IDENTIFICATION No.	PAGE
<u>1005-00-615-</u> 8375	17	<u>3110-99-950-</u> 0567	17	<u>5305-00-515-</u> 6883 6884	9 9
<u>1005-00-621-</u> 2654	10	<u>3120-00-610-</u> 8201	14	<u>5305-00-558-</u> 3689	6
<u>1005-00-622-</u> 1301	5	<u>4730-00-514-</u> 0485	17	<u>5305-00-600-</u> 8824	5
<u>1005-00-626-</u> 1101	5	<u>4730-00-517-</u> 1491	17	<u>5305-99-120-</u> 1704	6
<u>1005-00-650-</u> 8237 7052	21 14	<u>4933-00-550-</u> 3854	21	<u>5306-00-513-</u> 9973	14
<u>1005-00-653-</u> 1749 5233	21 5	<u>5120-00-556-</u> 8334	21	<u>5306-00-516-</u> 9879 9880 9881 9882	14 14 14 14
<u>1005-00-659-</u> 1428	21	<u>5120-00-614-</u> 7277	21	<u>5310-00-011-</u> 4942 5728	14 14
<u>1005-00-710-</u> 0059	13	<u>5120-00-650-</u> 7389	21	<u>5310-00-012-</u> 5016 5754	5 18
<u>1005-00-714-</u> 2261 8399	9 5	<u>5305-00-013-</u> 3617	5	<u>5310-00-013-</u> 8167 8595	18 13
<u>1005-00-716-</u> 2630 2632 2633	9 9 9	<u>5305-00-022-</u> 7364	13	<u>5310-00-050-</u> 3347 3377	17 17
<u>1005-00-716-</u> 2630 2632 2633	9 9 9	<u>5305-00-054-</u> 0896	14	<u>5310-00-513-</u> 9964	18
<u>1005-00-840-</u> 8768	18	<u>5305-00-501-</u> 3167 3249 3250 3258	10 9 9 9	<u>5310-00-711-</u> 0440	9
<u>1005-99-960-</u> 2797 4531 4546 5518 5519 5526 5527 5528 5529 5553 5554 5555 5556 5557 5558 6843	21 5 21 6 6 6 6 6 9 6 13 5 5 6 10 6	<u>5305-00-502-</u> 0527 0609 0613	5 9,13 13	<u>5310-00-716-</u> 2631	9
		<u>5305-00-513-</u> 9988 9989	18 18	<u>5310-99-101-</u> 2862	5
		<u>5305-00-514-</u> 0612 1950	18 18	<u>5310-99-120-</u> 2520 6043	6 18

PART OR ITEM IDENTIFICATION No.	PAGE	PART OR ITEM IDENTIFICATION No.	PAGE	PART OR ITEM IDENTIFICATION No.	PAGE
5310-99-912- 9583	6	5315-99-942- 0389	14	GB16597	17
				GB21276	17
				GB21301	14
5310-99-941- 0880	17	5315-99-960- 5521	6	MG35GA	14
0885	18	5523	6	MG4813	6
0924	14	5524	6	MG5677	21
0926	14	6615	6		
1274	17				
1279	18				
1318	14	5320-00-050- 5832	18	MT1/5111	17
1320	14				
8936	18				
9041	17				
9042	17	5320-00-502- 0509	5	SM63321	21
		0513	5		
5315-00-021- 8218	17	0514	5		
		0522	5		
		0600	5		
5315-00-500- 9278	9	0601	5		
		0711	5		
		5320-00-713- 3164	5		
5315-00-501- 3162	10				
3166	10	5320-99-960- 5525	9		
3700	10	6616	6		
5315-00-502- 0498	6,9				
0503	6	5340-00-514- 2877	14		
0567	6				
0570	5				
		5340-00-517- 4113	17		
5315-00-513- 5052	13				
9983	17	5355-00-513- 9982	17		
9995	17				
5315-00-514- 0004	14	5355-00-515- 2432	10		
1090	17				
5315-00-515- 6881	9	A19/C59736	21		
7434	6				
		BD0133	21		
5315-00-516- 2810	10	BD9225	21		
3398	10				
		BE6063	21		
5315-00-712- 3315	5	BE9445	21		
		BG4070	21		
5315-99-915- 6372	5				
		CM2015	21		
		FL1062	18		